

## ATMOS



### Features

- High Voltage (AC/DC)
- High Power
- IP65
- Provision for temp. signalling thermostat

### Customisable Options (contact us)

- Power
- Voltage
- Heater Matrix
- Lead wire
- Temp. Signalling

DBK's knowledge of thermal management gives us the experience to guide and support you with your technical challenges - we can manage the complete project from concept to full production release.

ATMOS	250	450	650
Nominal Power Output (25°C) [W]	2kW	4kW	6kW
Voltage [V]	400V [600V available]		
Inrush current (400V) [A]	13A	25A	38A
Connection	6.35×0.8mm Spade Connector/ IP65 Connector System		
Dimensions (LxWxH) [mm]	250×90×30	450×90×30	650×90×30
Mounting	4×M5		
Airflow (recommended)	5m/s		
Ingress Protection	IP20 / IP65 (with IP65 Connector System)		
Operating Temperature Range [°C]	-20 to 70°C		
Protection Class	II		
Maximum Temperature	200°C		
Weight [g]	575	1050	1450

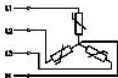
### Design Drawing

#### Connection

1P 230-400V



3P Star 230V



3P Delta 400V

